



In The News

elehoa.com

September 2011

2010-2011

Board of Directors

President

Mike Gerro

Vice President

Guy Donaldson

Secretary

Cathy Nordman

Treasurer

Andy Cox

Pool

John Nohinek

Architecture

Bill Maize

Social

Bill Zacharias

Tennis

Clark Hellier

Grounds

Dianne Del Cid

Communication

Jean Christenberry



From The President

Submitted by Mike Gerro, ELE President



Well, it's hard to believe that summer is already coming to an end. It feels like the heat and drought have taken their toll, especially when you look out at Lake Arlington. Though the weather service says we have missed the official record, it sure feels like a record to me!

Despite the heat, it seems to have been an active summer in ELE. The pool usage has been one of the highest I recall and the clubhouse has been quite active with parties and social events. I have even noticed a fair amount of usage of the tennis courts despite the heat. It is wonderful to have these amenities as part of our neighborhood.

In September, we will be holding our Annual Meeting and are hoping for a good turn out. This is a time, when as a community, we discuss events of the past year and new business for the coming year. It is also a time when we engage new neighbors into leadership and participation on the board and committees that work to serve the neighborhood as a whole. We will be electing three new board members to begin serving a three year term. One of those replaced will be myself, as my three year term comes to an end.

We are currently taking nominations for the three board positions. Please email or call myself or one of the other board members if you or someone you know is interested in serving. I can assure you it is fun and rewarding to serve.

As always, please don't hesitate to contact the board if you feel something is not right or if we can be of service. I look forward to seeing you at the annual meeting in September.

Women's Club Activities

ELE Women's Club Activities Begin in September:

Here's a list of upcoming events:

September 15th—Poolside Luau Party at Neighborhood Pool

October 20th—Wine Tasting at Kathleen Valentine's Home

November 17th—P.A. Lisa Moody from Mansfield Dermatology to speak
at Jean Christenberry's Home

December (date to be determined) - Christmas Auction for Charity

Please join us for food, fun and fellowship.

ELE Grounds Committee By Dianne Del Cid, Board Chair

The Lake Mead entrance and Enchanted Lakes entrances lost the majority of their seasonal summer color to the sustained high temperatures. The decision was made to wait until fall to replace the flowers rather than do an interim planting. The weather is dictating what plants will be used next summer – drought tolerant and Texas native!

Falcon Lake Entrance has struggled through the summer with new plantings. The Neitzel family has continued to provide additional water for the plantings. Thank you so much, again, Neitzels!

Repairs to the articulated concrete wall behind the Tennis Court were completed in June. The canal is now drained of water due to the drought which revealed the opposite wall in need of repairs as well. This repair is minimal and should be completed at the time of this printing.

Soaker hoses have been installed to help provide moisture for the plants along the west fence of the tennis court. With no water this summer, they were on a downhill course. Our lifeguards, especially Courtney, have been helpful in turning off the water after soaking sessions. Soaker hoses were also installed in the raised planter shrub beds between the clubhouse and the pool. It is unknown at this moment whether they will survive or not. There is no permanent irrigation in those raised planters, which will be a consideration for next years' budget.

John Burrus, our neighbor on Enchanted Circle, installed a new pump for the canal to keep water flowing and help to prevent the odor. We appreciate his expertise and labor for this important feature of our common area.

The row of Hollies was added along the fence line of the common area that parallels the road to the Lake Arlington boat ramp and park at Poly Webb is surviving due to the temporary irrigation installed with the contribution of a hook-up from Hal and Linda Puckett's irrigation system. If you see them, please mention our appreciation for their collaboration.

The clubhouse color beds have maintained over the summer – thank goodness for the shade provided by the large Oak trees!

Three dead trees were removed along the canal near the private fishing dock and boat ramp. In addition, the wood on the dock was power-washed due to the mess created by the bird population.

Please come to the general meeting in September to sign up for the grounds committee if you are interested. I welcome your ideas and participation!



ELE Neighborhood Book Club



The ELE Book Club meets the Second Thursday Morning of Each Month.

Newcomers are welcome, but should RSVP to

Linda Puckett (817-516-7931) or to Ronnie Barker (817-478-0880).

**Do you want to serve on the ELE
HOA Board?**

**Let us know—contact any ELE
HOA board member. You can
make a difference in your
neighborhood!**

Important Notice ELE Homeowners Annual Meeting

Don't forget to mark your calendar and attend our annual ELE Homeowners meeting. The meeting is scheduled for September 18th, 7:00pm at the Clubhouse. At the annual meeting, you can sign up to volunteer on committees, hear a quick update from the board, and the treasurer's report will be presented. In addition homeowners will be asked to elect new board members. Nominations for these positions will be taken from the floor or you can contact Cathy Nordman (c.nordman@sbcglobal.net) to have your name added to the official ballot.

If you are unable to attend, please complete the attached proxy at the bottom of this page and return to any board member or homeowner planning to attend the meeting. As stated in our by-laws, we must have one-tenth of the homeowners, eligible to vote, present, in order to have a quorum and elect our new board. We are required to reschedule the meeting if we fail to meet the 10% participation rate. The ELE Board looks forward to seeing you on the 18th of September in person or by proxy. Thank you for your support.

PROXY

ELE Homeowners Annual Meeting

September 18, 2011

7:00 pm at the Clubhouse

The homeowner, residing at _____

and in good standing, gives _____

or a current Board Member (if no individual is named) authority

to represent and vote for me at the Annual

Enchanted Lake Estates Homeowners Association Meeting.

Date

Homeowner's Signature

***Important Note: This proxy is null and void if the above homeowner is present at the meeting.**

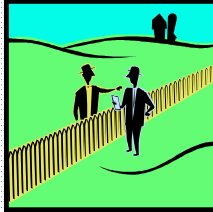


Welcome to the Neighborhood

Welcome to our new ELE Neighbors

Bob & Celine English recently moved into 3908 Falcon Lake Drive from San Antonio. They have a son who teaches English in China, a son and daughter in law who are both ministers, and a daughter and son in law who teach math. They also have a cat named Eve. Bob is retired from G.E. and Celine is a teacher.

Bob and Angie Pigat from Bellville, Ohio moved into 3619 Lake Pontchartrain Drive. Bob is a toolmaker at General Motors and Angie is a professional photographer. They have two grown daughters, one living in Columbus, Ohio, and the other is in Seattle, Washington. They have been in the Arlington area for a year.



ELE Women's Club Officers for 2011-2012

Julie Landry
Jean Christenberry
Beth Hellier
Lisa Sawyer
Ellie Hass
Mary Hibbs / Dianne del Cid
Ellie Rexinger
Ronnie Barker
Sharon Zacharias
Kathleen Valentine

President
Secretary
Treasurer
P.R.
Auction
Membership
Programs
Sunshine
Historian
Community Service Project



Top five projects most homeowners are unaware that require Architectural Review

1. Roof replacements
2. Fences, new or replaced
3. Repainting your house exterior when changing existing color
4. Erecting a utility/storage shed
5. Any renovation which changes the footprint or exterior look of your house

Please contact Bill Maize, Architectural Board Chair via email if you have any questions.
Put "Architecture" in the subject line.

duodesign@sbcglobal.net