

Happy
New Year!

ELE Newsletter

JANUARY 2018

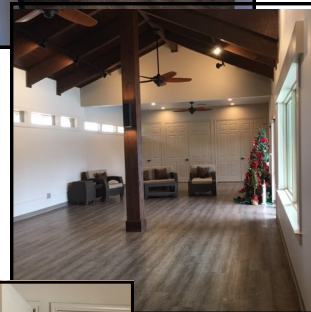
CLUBHOUSE IS FINISHED

The ELE Board of Directors officially accepted and signed off on the completion of the remodeling work done on the ELE Clubhouse in early January. Many of you have already been able to visit and see the changes, but for those that have not, there are a few more final pictures.

The new industrial strength floor is built to stand up to wet feet and lots of use, but still give that wood floor appearance through out the entire building. The lighting is updated and new fans installed. Wiring and plumbing have been repaired and updated where needed for utility and safety. A new water heater was also installed. The bathrooms are both updated, with new toilets. The kitchen, while taking up about the same footprint, was completely updated with new cabinets, granite counter tops, refrigerator, microwave and sink. And, the high slit windows are cleaned and polished, creating much more light. Everything was painted, and the ceiling was stained and sealed. Despite many alternate solutions offered up,

the infamous center post had to remain for structural purposes. However, it was wrapped with wood and beautiful sconces added to dress it up and add more light.

Funds for this project came from ELE HOA dues and gas royalties. Total cost for this remodel was \$84,434.



Inside this issue:

Jiggle Butt Run	2
ELE Property Taxes	2
Early Pioneer	3
Women's Club News	3

Important Dates

- January— HOA Dues Due
- Feb 14—Valentine's Day
- Feb 19— AISD Holiday
- Feb 21-22— Oakridge Parent/Teacher conferences
- Feb 22 —Oakridge Elem. Early dismissal



Jiggle Butt Run

A dozen or so years back, ELE resident Mary Hibbs and a group of running friends found a \$100 bill. They decided that it should be put to good use rather than spending it on themselves. So, they set to work looking for a meaningful way to use it. In 2006, the first annual **Jiggle Butt Run** was the result of those efforts.

The 5K Walk/Run raises funds, goods and awareness for Safe Haven, Tarrant County's domestic violence service provider. Their services include immediate shelter and housing, support and counseling, as well as prevention and reformative services. Last year's Run netted over

\$50,000 in support of Safe Haven. The grand total to date exceeds \$170,000. Over 2000 women took part last year in an effort to end domestic violence here in Tarrant County. Women also bring towels, sheets, and baby items for those in

need at the facility.

This year, the run will be held on Saturday, January 27th at UTA, so will probably be completed before this newsletter reaches you. But there is always next year!! If you don't feel up to running or walking the 5K, there are lots of ways to be involved. People are needed to hand out packets, direct runners, hand out water or coffee, plus many other necessary jobs. Or, the runners always appreciate cheerleaders.

The Jiggle Butt Run is USATF-certified course—a road race course whose distance has been certified for accuracy. Courses must be certified for any road running performance to be accepted as a record or to be nationally ranked.

To be a part of this terrific effort (running, walking or just cheering from the sidelines) contact Mary Hibbs (in the directory), or send her your tax-deductible check made out to Jiggle Butt Run.

SafeHaven's Immediate Needs:

- Women's Underwear (sizes 5-11)
- Ethnic Hair Products and Brushes
- Adult Coats (Sizes S to XXX)
- Cold/Flu Medication (Adult and Children)
- Vaseline
- Baby Bottles
- Gift Cards (Retail and Fuel)
- The T Local 7-day pass - (can be purchased at SafeHaven)

PROPERTY TAXES GOING UP?? GOOD NEWS/BAD

By: Jean Christenberry

Real estate is always changing. Our ELE neighborhood in particular experienced a great deal of change in 2017 home sales prices. Our average sales price increased a whopping 11% from 2016 to 2017. The average sales price of ELE homes increased from \$350,659 in 2016 to \$389,275 in 2017*.

Days on market slowed from an average of 62 in 2016 to 85 in 2017. Additionally homes with updates increased their sales price per square foot anywhere from \$5-\$20 per square foot depending on the type of updates that were made.

Of course, there's good news and bad news with this real estate change. The good news is that it is still a seller's market and you can get a great price for your home sale. The bad news is property taxes are going up.

It might be time to ask a local realtor for a comparable sales analysis or even hire a property tax appeal service to determine if your taxes are in line with current property sales and values. Basically, what we all know is still true in real estate – ELE is a great place to live (and to invest in real estate).

*data from NTREIS



Jean Christenberry,
Owner, Team Leader
The Christenberry Group —

Keller Williams Realty Arlington

ENCHANTED LAKE ESTATES PIONEER

By: Ronnie Barker

From the earliest days in the ELE neighborhood (1975 and onwards) many neighbors have generously given their time and energy to keep the community thriving. New residents in ELE will not know of the many traditions started by the late Ed Lukert (Colonel, US Army, Ret. Jan. 5, 1927 - August 5, 2004).

Ed initially conceived the idea for the Neighborhood Directory, and designed each of the sections that keep us organized and informed. He found advertisers to pay for printing and binding, a tradition carried on by Martha Rew. New residents to ELE, and long term residents find this Directory to be helpful and welcoming. Knowing the names and addresses of neighbors, the ages of children, the Babysitter and Miscellaneous Job List, the Cross Reference listing, the current ELEHOA Board members and various committees, The Block Representatives and boundary map, the Pool regulations pages - were all first de-

signed by Ed in the late 70's.

Ed was also responsible for arranging for the flagpole and American flag that grace the main ELE entrance, and for the bulletin boards at all 3 entrances that announce

"He was the original can-do guy who we all turned to."

community activities.

There was a memorable morning when a Boy Scout troop first raised the flag, and gathered neighbors spontaneously sang America the Beautiful. Ed was instrumental in running the ELE pool, finding lifeguards and obtaining safety signage. He was the original can-do guy who we all turned to.

Ed's wife, Carol V. Lukert, remains an active ELE homeowner. Carol was one of the three first ELE residents on the HOA Board of Directors, as responsibility transitioned from Farm and Home Bank owner-

ship to Homeowner responsibility. Dave Turney and the late Eldon Conrad were the other two original members.

Forty years later, we salute the energy and service that Ed Lukert brought to this new community when there were only a dozen new homes on Lake Pontchartrain, with paved streets and empty lots awaiting future homeowners. We are now a community of 330 homes, and a premiere place to live in Arlington.

Please give a generous thank you to your volunteer neighbors, past and present, who have served on the ELEHOA Board in any capacity. Our annual dues would be many times higher if we had to pay for the organizational services they provide. Each Committee would like input from new neighbors, and it is really easy to get involved and to volunteer in some capacity. Perhaps some forty years from now, someone will write about your contributions to ELE life!

ELE WOMEN'S CLUB— FEBRUARY

Rebecca Wells is hosting the service project meeting next month on February 15th so please mark your calendars now!

There will be a mental health professional that will speak to the group on a few topics that YOU will get to choose. The Women's Club's Facebook page, *ELE Women's Club*, has a list of poten-

tial mental health issues that you can vote on as topics. They include Hormonal shifts, ADHD, Stress & Mindfulness, Adult or Childhood mental health issues, and Difficult family members.

There will also be an opportunity to make a positive impact on our local community as there will be discussion on how to allocate the auction pro-

ceeds.

The meeting starts at 7 PM on February 15 (Third Thursday of the month as usual) at Rebecca Wells' home at 4012 Falcon Lake Dr.



Looking for 2018 graduates! May's Newsletter will be dedicated to the graduates of ELE. Please send me your pics and bio as soon as you can. Special days deserve special recognition!

dmtejada@sbcglobal.net